

The following is an example of search results ...

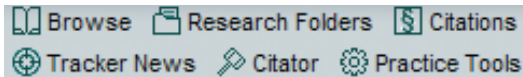
Keep as many tabs open as 10 tabs open | Quick links to research tools (see page 2) | Select your practice area profile or search scope | Type search term(s) [This example: Results are sorted by Document Type with three most relevant items per group] | Temporarily set aside documents for later use | Access your saved searches | Select research content | Set up your preferences | Close all tabs

The screenshot shows the IntelliConnect interface with the following annotations:

- Search/Browse:** Search term: "U.S. Securities & Corporate" and "broker-dealer registration exemption".
- Document Tray [0] | History | Saved Searches | Practice Areas | Preferences | Help | Log Out**
- Home | Browse | Citations | Tracker News | executive compen... | s1031 family | fsia controlling iss... | Research Folders | broker-dealer regi... | Related Results**
- Narrow Your Results** (Left sidebar):
 - All results [32821]
 - by Document Type [25641]: Explanations [240], Laws [138], Regulations [278], Cases [861], Treatises [266], News [2059], Journals [114], Practice Tools [1], Research Aids (Decision Trees, Flow Charts, Etc.) [236], Annotations [136], Agency Materials [20626]
 - by Practice Tools [1]
 - by Library: Corporate Governance [21896], Corporation & Business Organizations Law [239], Exchanges & SROs [4238], **Securities (Federal) [25641]**, Securities (State) [2474], Practice Tools [2]
 - by Court [502]
 - by Jurisdiction [25641]
- Jump to:** Explanations | Laws | Regulations | Cases | Treatises | News | Journals | Materials | Legislative Documents | Misc. Editorial Content | Forms | Other Document
- All categories:** Collapse | Expand
- Explanations (View all 240)**
 - 1. Explanation: **Federal Securities Law Reporter, Banks and Broker-Dealer Registration**...repealed the blanket exemption banks had historically...those trades to a broker-dealer. The exemption also includes...Broker-Dealer Registration
 - 2. Explanation: **Federal Securities Law Reporter, [125,320], CCH Explanation—Preemption of State Broker-Dealer Regulation**...regulation of broker-dealers and associated...regulation of broker-dealer books and records...associated with broker-dealers. The intent...uniform federal exemption for such associated...necessitated registration even if the client.
 - 3. Explanation: **Federal Securities Law Reporter, [122,835], CCH Explanation—Broker-Dealers—Unlawful Transactions**...is a broker or dealer or bank (17 CFR...stockholder even if registration was not in the customer's name. The broker or dealer, acting...and dealer, an exemption may be available...a day when the broker-dealer was not participating...In order for the exemption to be available...
- Laws (View all 138)**
 - 1. Enacted Law: **Federal Securities Law Reporter, 1934 Securities Exchange Act Sec. 14(b)(11), BROKER/DEALER REGISTRATION WITH RESPECT TO TRANSACTIONS IN SECURITY FUTURES PRODUCTS.—**
- Go to Search Term** | **In Results** | **Send to Tray** | **Save/Email** | **Print**
- Document Path** | **Read Previous Document** | **Read Next Document**
- Federal Securities Law Reporter, Banks and Broker-Dealer Registration**
- Laws & Regs** | **Annotations**
- .025Banks—Broker—Dealer Registration.—** In late 2007, the SEC and the Federal Reserve Board adopted rules to implement the bank «broker» provisions of the Gramm-Leach-Bliley Act. The joint rules, codified as Regulation R, were designed to accommodate the business practices of banks while

Callouts and Annotations:

- Run your search** (points to the Go button)
- Record-keeping options for your results list and document** (points to the Jump to and All categories sections)
- Uncheck to display results in single list sorted by Relevancy or Most Recent** (points to the Categorized View checkbox)
- Click an item to jump to that group within your search results** (points to the Explanations link in the Jump to section)
- Use filters to narrow your results to specific item(s) of interest** (points to the sidebar filters)
- View the path to this document** (points to the Document Path section)
- View related documents such as laws, explanations, regulations and current developments** (points to the Laws & Regs and Annotations buttons)
- Go to the next or previous document on the results list** (points to the In Results dropdown)
- Go to the next or previous document in the publication** (points to the Read Previous/Next Document buttons)
- Display your document in a new window** (points to the Send to Tray button)
- Display your document in full screen mode** (points to the full screen icon)
- Close your document** (points to the close icon in the top right)



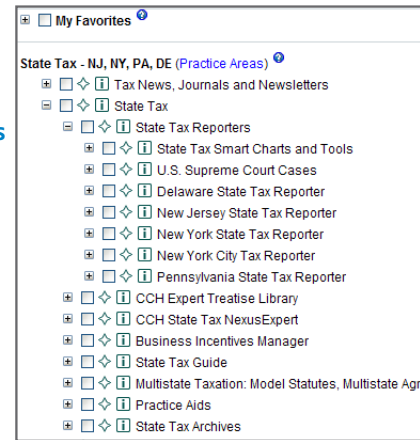
Commands at the top of Browse

- Clear All: Clear all checked boxes
- Expand/Collapse all menu topics
- Show document list of all selected documents
- Save links to selected content
- Titles A-Z: View and locate titles in your subscription

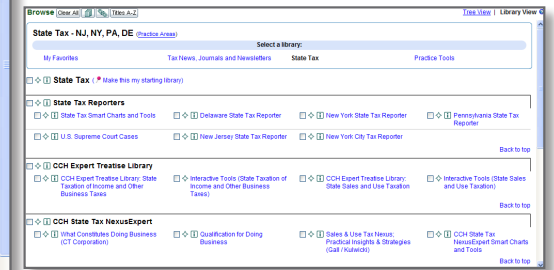
Browse

Browsing through the contents

- **Tree View:** Click through the expandable/collapsible topics using the + and - icons to review the items in your subscription.



- **Library View:** Display contents in screen-width display and click through sub-topics.



Citations

Retrieving document(s) using a citation

- Locate the desired library/publication using the tree on the left. For example:



- Type the citation number in the appropriate box and click Go.

Federal Securities Law Reporter	
1933 Securities Act §	<input type="text"/> <input type="button" value="Go"/>
1934 Exchange Act §	15(c) <input type="button" value="Go"/>
1939 Trust Indenture Act §	<input type="text"/> <input type="button" value="Go"/>

Citator

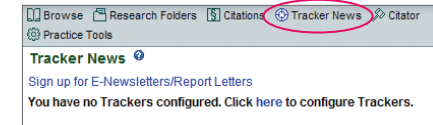
Monitor cases and rulings

- Available for Federal/State Tax and Board of Appeals subscriptions

Citator All Citator Formats Citator-Federal Taxes CASES RULINGS DISCONTINUED RULINGS-A-L DISCONTINUED RULINGS-M-Z Citator-Government Contracts Citator-Financial and Estate Planning Citator-State Taxes	RULINGS Cumulative Bulletin <input type="text"/> <input type="button" value="Go"/> Announcement <input type="text"/> <input type="button" value="Go"/> C.D.O. No. <input type="text"/> (Rev. <input type="text"/>) <input type="button" value="Go"/> Executive Order <input type="text"/> <input type="button" value="Go"/> General Counsel's Memo No. <input type="text"/> <input type="button" value="Go"/> IRS News Release IR- <input type="text"/> <input type="button" value="Go"/> IRS Publication No. <input type="text"/> <input type="button" value="Go"/> Letter Ruling No. <input type="text"/> <input type="button" value="Go"/> Notice <input type="text"/> <input type="button" value="Go"/> Revenue Procedure 2011 - 9 <input type="button" value="Go"/> Revenue Ruling <input type="text"/> <input type="button" value="Go"/>
--	---

Tracker News

Tracking news and receiving updates



- Click **Sign up for E-newsletters/Report Letters** to set up automatic email delivery or RSS feed of selected report letters, newsletters, and/or update notifications for treatises/journals (each sent separately).
- Click **here** to configure Trackers (or **Add/Modify Trackers** if you've already created Tracker searches)
 - Check box(es) for desired Trackers
 - Optional - Click the target icon and select additional options, such as specific states, document types, topics or search expression and click OK.
 - Click **Add Tracker(s)** at bottom. (All results sent daily in a single email)

TIP: Search for citations or integrated citation/word search (see page 3)

Searching

1. Select search scope

By default, searches will include all of the content in your subscription. To change your search scope, click the down arrow in the Search/Browse box.

- **all content**—Searches all of the content in your subscription
- **practice area**—Practice Area profiles that you create
- **within results**—Searches just the results from the active search tab
- **selected content**—Searches just the items you have selected (i.e., clicked the check boxes) within the Browse Tree
- **this document**—Searches just the active document on the screen
- **citations**—Searches for documents using a complete citation, e.g., 34 Act s15(c)

2. Type your search term(s)

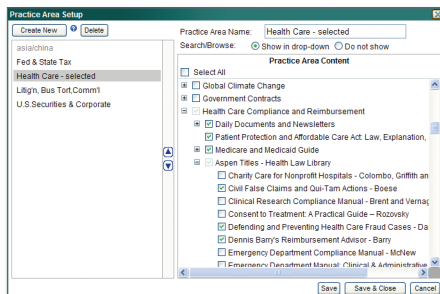
(e.g., home office deduction) in the search box.

3. Optional: Click Advanced Search to turn Thesaurus On/Off and/or limit search by jurisdiction, court, or date

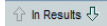
4. Click Go.

TIP:

Create up to 20 Practice Area profiles to customize the content available for Browsing/Searching



Viewing search results and documents

- Check **Categorized View** to display top three results within each Document Type.
- Uncheck **Categorized View** to display results in single list by Relevancy
- Click **Most Recent** to change display to reverse chronological order
- Click a document in the search results pane to view it in the preview pane at the bottom of the screen
- Move through your results list by clicking different items or use the  command in preview pane to navigate between results

TIP:

Search for citations only using scope = citations

Federal Tax examples—

To retrieve IRC s1031, search for: s1031

To retrieve IRC s1031 from Standard Federal Income Tax Reporter, search for: FED s1031

Federal Securities example—To retrieve 34 Exchange Act s16(b), search for: 34 Act s16(b)

Narrowing your results using Filters

You can narrow your results by using Filters which break down search results into specific categories.

- **Document Type**, such as Explanations and Laws
- **Practice Tools**, such as Smart Charts™
- **Citation Results** (available only for integrated citation/word search, e.g., s163 hobby)
- **Library**, such as Federal Tax, Securities (Federal)
- **Court**, such as U.S. Court of Appeals
- **State Tax Type**, such as Sales and Use
- **Jurisdiction**, such as Federal or State

TIP:



Use the icons at the top right of the document preview pane to open the document in a new window, maximize the preview pane, or close the preview pane.

Managing Documents

Use options at top of lists and documents

- **Print:**
 - PDF
 - Text
 - Selected as list (*from List only*)
 - Selected text (*highlighted selection from within Document only*)
- **Save:**
 - PDF
 - Text
 - Search (*from List only*)
 - Link to document (*from Document only*)
 - Email document (*from Document only*)
 - To Research Folders
- **Send to Tray:** Temporarily set aside item(s) to a Document Tray for later use.

Commands available in the top menu bar

- **Document Tray**—Access up to 50 documents set aside for later use.
- **History**—Access recent documents you viewed or searches you conducted.
- **Saved Searches**—Access your saved searches.

Research tool command

- **Research Folders**—Access documents previously saved to folders

Access Practice Tools:

- At the bottom of the Browse Tree, with icons for adding selected tools to My Favorites*
- Use the separate command within the gray tool box*

* only available within 'all content' or if Practice Tools were specifically added to your Practice Area Profiles

- Some libraries include Practice Tools integrated within the Browse menu, e.g., Banking (Federal); Securities (State)

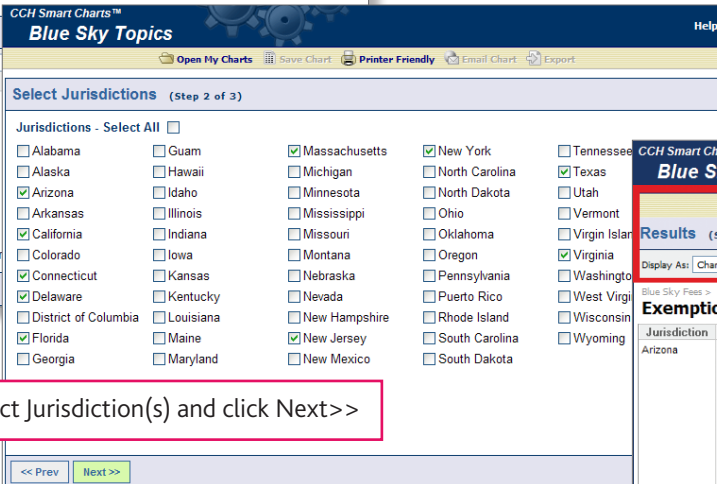
Practice Tools are easily recognized by the cog wheel graphic.

Add Practice Tools to your Favorites by clicking the diamond

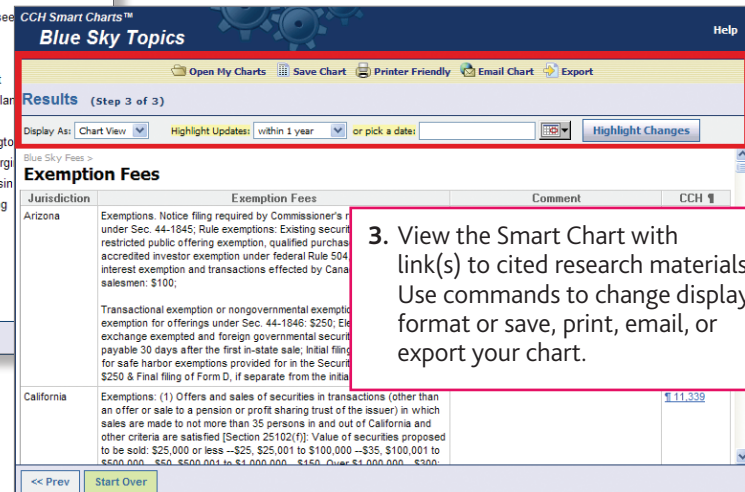
The Smart Charts tool in the CCH Blue Sky Law Reporter



1. Select Topic(s) and click Next>>



2. Select Jurisdiction(s) and click Next>>



3. View the Smart Chart with link(s) to cited research materials. Use commands to change display format or save, print, email, or export your chart.

To download a PDF of this card:
<http://business.cch.com/training/QRC.pdf>

Need Help? Click Help or

Customer Support—<http://Support.CCH.com>

Call 800 449-6435—#2 for Product Support—#3 for Technical Support