

Announcing IntelliConnect® version 2.1



Introducing IntelliConnect® 2.1, the newest evolution in online research from Wolters Kluwer Law & Business.

In 2009, Wolters Kluwer Law & Business' forward-thinking approach enabled us to become the first to market with global search capabilities via the IntelliConnect platform—

a more efficient way to locate legal and tax content across multiple sources.

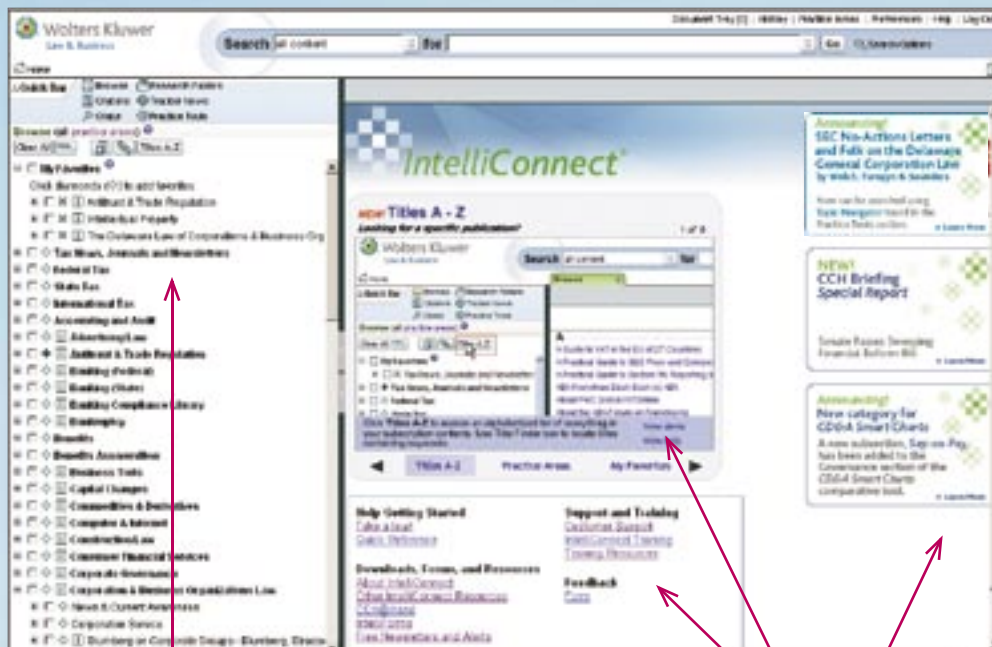
Designed as a living platform, we are able to refine IntelliConnect as needed, adding functionality that is both user-driven and technology enhanced.

A direct result of customer feedback, our new 2.1 enhancements include:

- Redesigned home page
- Improved access to content
- Enhanced viewing of search results
- Expanded Tracker News format
- Easier to find and faster tools for setting up Practice Areas

Redesigned Home Page

Several changes have been made to IntelliConnect's home page that you'll see immediately upon login.



- Browse tree opens automatically upon login
- **My Favorites** is expanded, and contents are listed in alphabetical order.
- Instructions for adding Favorites
- Font size is larger and adjustable using your Browser commands.



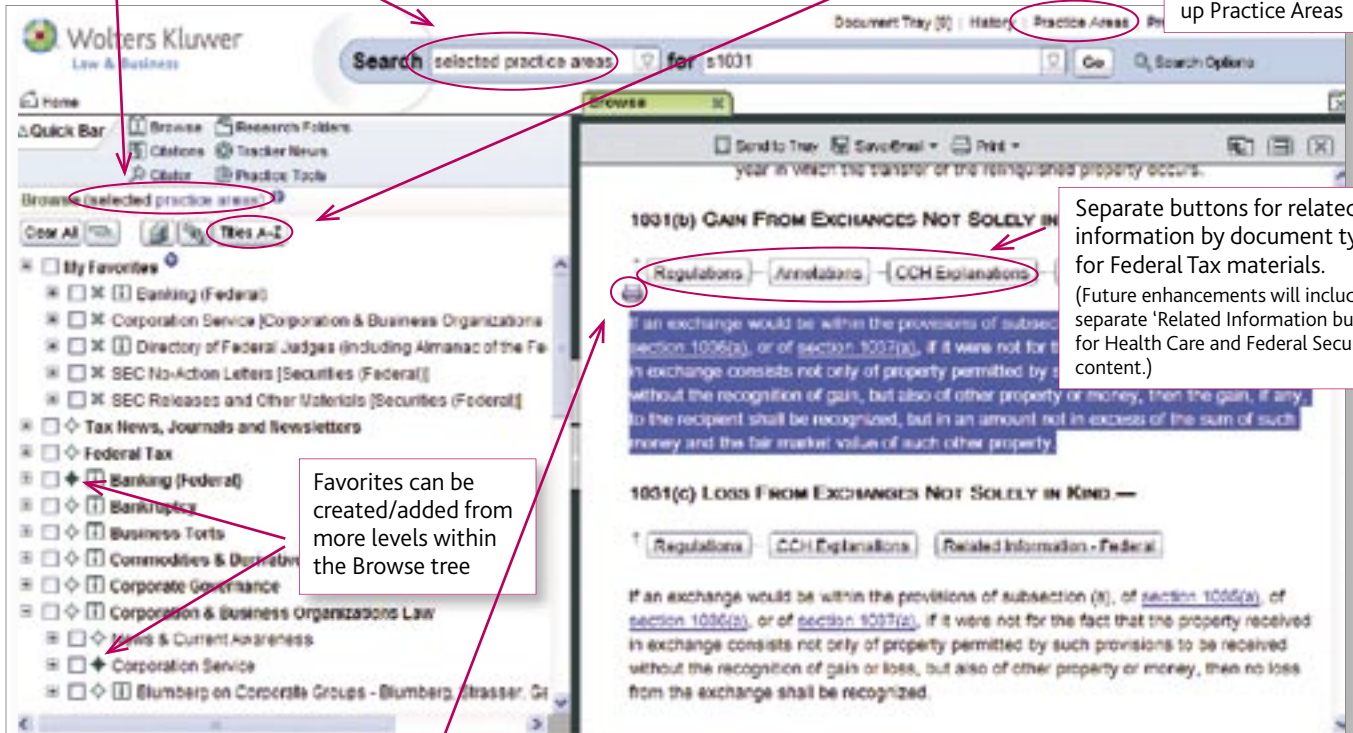
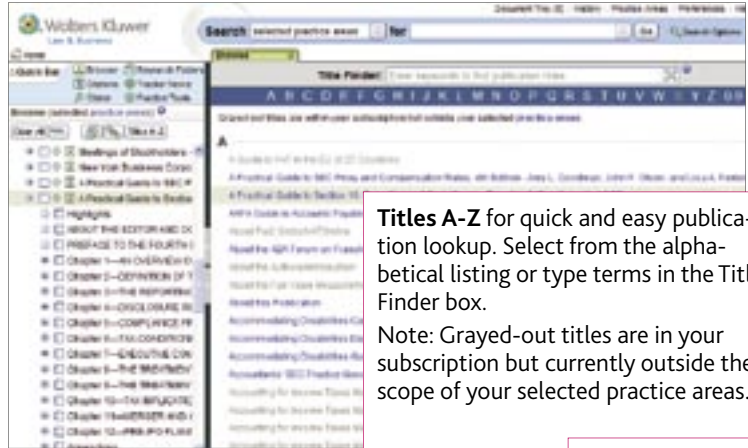
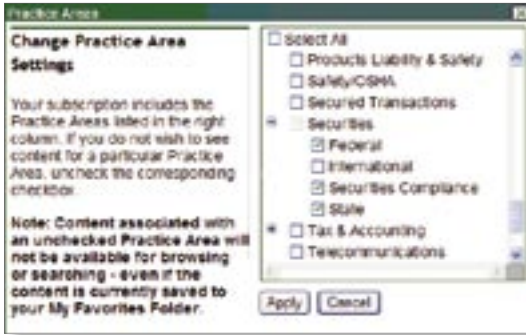
Right panel contains helpful tips and links

Improved Access to Content

Several existing features were enhanced and new functions added to provide better access to key content.

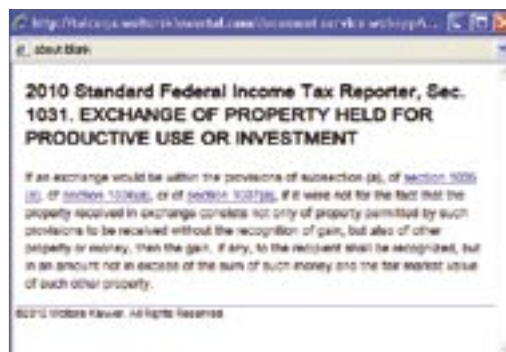
Practice Areas Enhanced

- Faster
- 'Select All' at top
- More streamlined alphabetical listing
- Indicators denote 'all ...' or 'selected practice areas'



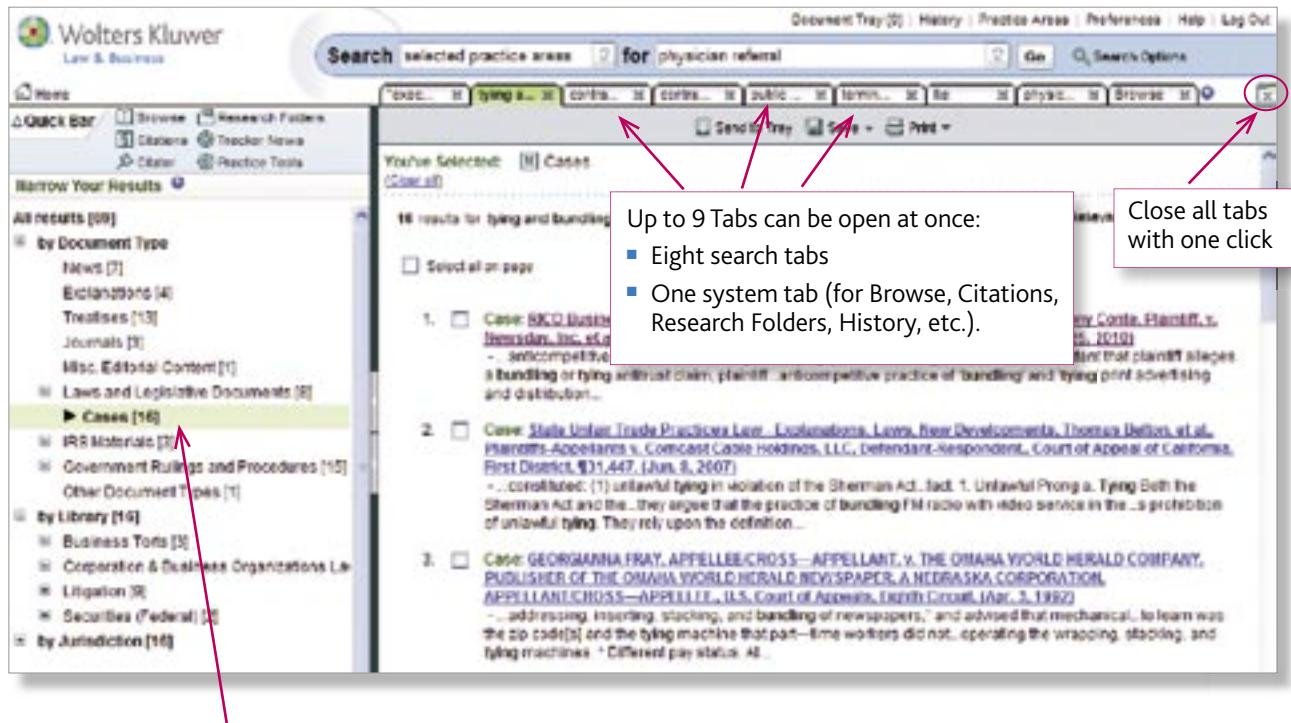
Highlight text and use the new **'Print Selected Text'** command to print just your selection along with the document title, which is automatically included.

Note: You can cancel the print and just use this feature to copy/paste selected text/title as needed.

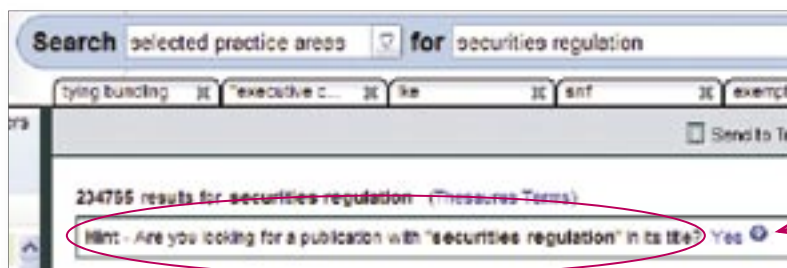


Enhanced viewing of search results

We've increased the number of search tabs that can be open at one time, added a new 'Close all' command, enabled automatic filtering, and improved visibility of filters when narrowing results.



- The last search filter you used will automatically open when you conduct your next search. (Initially, the 'by Document Type' filter will be expanded.)
- When you select a filter, you'll still be able to view other filter categories.

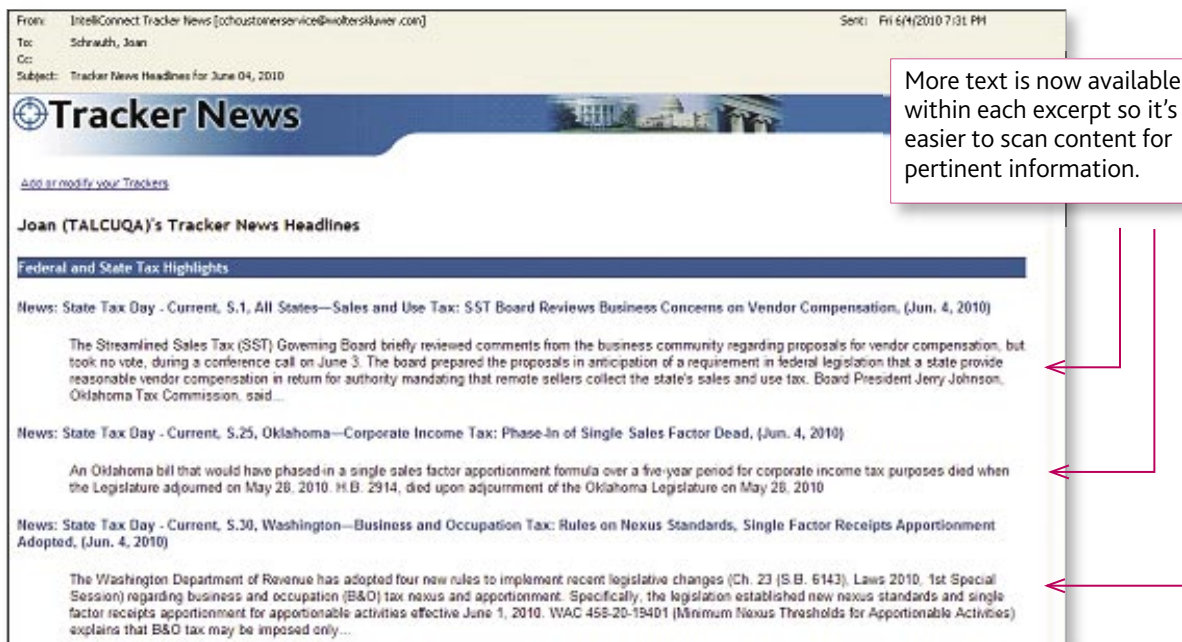


Plus... There's a new IntelliConnect prompt at the top of the search results whenever your search terms are found in a publication title.



Expanded Tracker News format

Additional content has been added to the excerpts within Tracker News alerts for improved scanning of your daily customized news clippings.



From: IntelliConnect Tracker News [ochoustonerservice@hobbeslawyer.com] Sent: Fri 6/4/2010 7:31 PM
To: Schreuth, Joan
Cc:
Subject: Tracker News Headlines for June 04, 2010

Tracker News

[Add or modify your Trackers](#)

Joan (TALCUQA)'s Tracker News Headlines

Federal and State Tax Highlights

News: State Tax Day - Current, S.1, All States—Sales and Use Tax: SST Board Reviews Business Concerns on Vendor Compensation, (Jun. 4, 2010)

The Streamlined Sales Tax (SST) Governing Board briefly reviewed comments from the business community regarding proposals for vendor compensation, but took no vote, during a conference call on June 3. The board prepared the proposals in anticipation of a requirement in federal legislation that a state provide reasonable vendor compensation in return for authority mandating that remote sellers collect the state's sales and use tax. Board President Jerry Johnson, Oklahoma Tax Commission, said...

News: State Tax Day - Current, S.25, Oklahoma—Corporate Income Tax: Phase-In of Single Sales Factor Dead, (Jun. 4, 2010)

An Oklahoma bill that would have phased in a single sales factor apportionment formula over a five-year period for corporate income tax purposes died when the Legislature adjourned on May 28, 2010. H.B. 2914, died upon adjournment of the Oklahoma Legislature on May 28, 2010.

News: State Tax Day - Current, S.30, Washington—Business and Occupation Tax: Rules on Nexus Standards, Single Factor Receipts Apportionment Adopted, (Jun. 4, 2010)

The Washington Department of Revenue has adopted four new rules to implement recent legislative changes (Ch. 23 [S.B. 6143], Laws 2010, 1st Special Session) regarding business and occupation (B&O) tax nexus and apportionment. Specifically, the legislation established new nexus standards and single factor receipts apportionment for apportionable activities effective June 1, 2010. WAC 455-20-19401 (Minimum Nexus Thresholds for Apportionable Activities) explains that B&O tax may be imposed only...

More text is now available within each excerpt so it's easier to scan content for pertinent information.

And more!



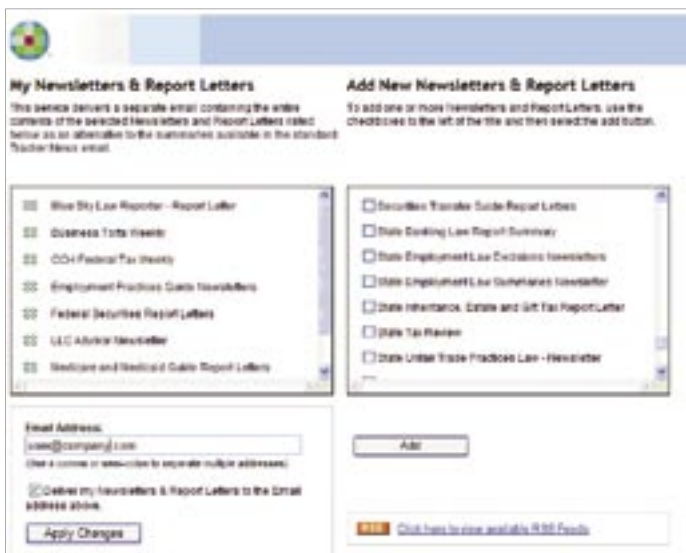
Quick Bar Browse Research Folders Citations Tracker News Citator Practice Tools

Tracker News

[Sign up for E-Newsletters/Report Letters](#)

You have no Trackers configured. Click here to configure Trackers.

More than 80 Report Letters and Newsletters are available for email delivery and RSS feed



My Newsletters & Report Letters

This service delivers a separate email containing the entire contents of the selected newsletters and Report Letters listed below as an alternative to the summaries available in the standard Tracker News email.

Add New Newsletters & Report Letters

To add one or more newsletters and Report Letters, use the checkboxes to the left of the title and then select the add button.

- Blue Sky Law Reporter - Report Letter
- Business Trade Alerts
- CCH Federal Tax Alerts
- Employment Practices Guide Newsletters
- Federal Securities Report Letters
- LEO Advisor Newsletter
- Medicine and Medical Guide Report Letters
- Securities Transfer Guide Report Letters
- State Banking Law Report Summary
- State Employment Law Decisions Newsletter
- State Employment Law Decisions Newsletter
- State Inheritance, Estate and Gift Tax Report Letter
- State Tax Manager
- State Utility Trade Practices Law - Newsletter

Email Address:
Use a comma or semicolon to separate multiple addresses.

Deliver my newsletters & Report Letters to the email address above.

To take advantage of these new features and more, attend a complimentary training session. For a calendar of classes, go to <http://business.cch.com/legalprotraining>. You'll also find links for IntelliConnect training, videos and other materials on our **Training Resources for Legal Professionals** website—<http://business.cch.com/training>